

FLOOR MOUNT RACKS

Why Specify Hypertec Floor Mount?

Our range of Hypertec 19" Floor Mount Racks cater for effortless installation of both the cabinet and your valuable equipment without compromising cabinet strength or security. Maintaining and accessing equipment is also made easy with Hypertec's improved rack features and wide range of accessories. Sturdy frame manufactured to precise dimensions from SPCC High quality cold roll steel with a thickness of 1.5mm for the frame and mounting rails and 1.0mm for other areas, making Hypertec racks light, but very rigid under load conditions.

Standards Compliance

Hypertec 19" Floor Mount Racks are compliant to the following Australian and International standards:

- Protection rating IP20
- ANSI/EIARS-310-D
- IEC297-2
- DIN41491
- DIN41494

Popular Sizes and Configurations

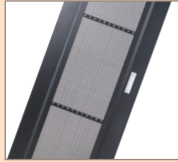
Available in 18RU, 24RU, 33RU, 38RU and 42RU in standard widths and variable depths. Special design for optional widths can be accommodated. Enclosure colour - Mannex Black.

Accessories Available

For information on the Floor Mount Rack accessories visit the website at www.legend.com.au



Features



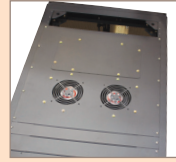
Perforated Front Door (optional extra)



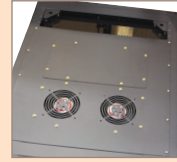
RU Making



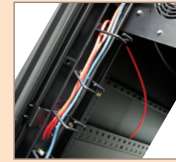
Pallet Tipping Bracket



Ventilation



Generous Cable Access



Cable Management



Increased Shelf Depth



Mounting Feet



Heavy Duty Castors

Specifications

Part No.	RU Height	Dimensions(mm)			Weight (Kg)	Configuration				Features											
		Width	Depth	Height		Fixed Shelves	Cooling fans cutouts	Cage nuts and screws	Power board rail	Adj. Internal side rails	Quick Release hinges door	Earth Leads	Cable access top and bottom	Optional Mesh Door	Side panels Cam lock	Glazed safety glass door 5mm toughened	Air con. access top and bottom	Heavy Duty castors	Adj. feet	Cooling fan module supplied*	
HR18RU6	18RU	600	600	1018	64.6	2	1	40	6 Way	✓	✓	✓	✓	✓	✓	✓	✓	✓	✓	✓	1
HR24RU6	24RU	600	600	1278	73.8	2	1	40	6 Way	✓	✓	✓	✓/✓	✓	✓	✓	✓	✓	✓	✓	1
HR24RU9	24RU	600	900	1278	89.4	2	2	40	6 Way	✓	✓	✓	✓/✓	✓	✓	✓	✓	✓	✓	✓	1
HR24RU1	24RU	600	1000	1278	95.0	2	3	40	6 Way	✓	✓	✓	✓	✓	✓	✓	✓	✓	✓	✓	1
HR33RU6	33RU	600	600	1658	72.0	2	1	40	6 Way	✓	✓	✓	✓	✓	✓	✓	✓	✓	✓	✓	1
HR33RU8	33RU	600	800	1658	105.0	2	2	40	6 Way	✓	✓	✓	✓	✓	✓	✓	✓	✓	✓	✓	1
HR33RU1	33RU	600	1000	1658	118.0	2	3	40	6 Way	✓	✓	✓	✓	✓	✓	✓	✓	✓	✓	✓	1
HR38RU6	38RU	600	600	1878	97.4	2	1	40	6 Way	✓	✓	✓	✓	✓	✓	✓	✓	✓	✓	✓	1
HR38RU8	38RU	600	800	1878	111.0	2	2	40	6 Way	✓	✓	✓	✓	✓	✓	✓	✓	✓	✓	✓	1
HR38RU9	38RU	600	900	1878	117.6	2	2	40	6 Way	✓	✓	✓	✓	✓	✓	✓	✓	✓	✓	✓	1
HR42RU6	42RU	600	600	2078	108.6	3	1	40	6 Way	✓	✓	✓	✓	✓	✓	✓	✓	✓	✓	✓	1
HR42RU8	42RU	600	800	2078	122.2	3	2	40	6 Way	✓	✓	✓	✓	✓	✓	✓	✓	✓	✓	✓	1
HR42RU9	42RU	600	900	2078	130.2	3	2	40	6 Way	✓	✓	✓	✓	✓	✓	✓	✓	✓	✓	✓	1
HR42RU1	42RU	600	1000	2078	138.6	3	3	40	6 Way	✓	✓	✓	✓	✓	✓	✓	✓	✓	✓	✓	1

Selecting your Hypertec Rack or Enclosure

Simply select the appropriate model and configuration for your needs then refer to our accessories table on the website at www.legend.com.au for additional equipment for your complete installation. You can also call our experienced sales team to discuss our range and available options on 1800 3282 00